

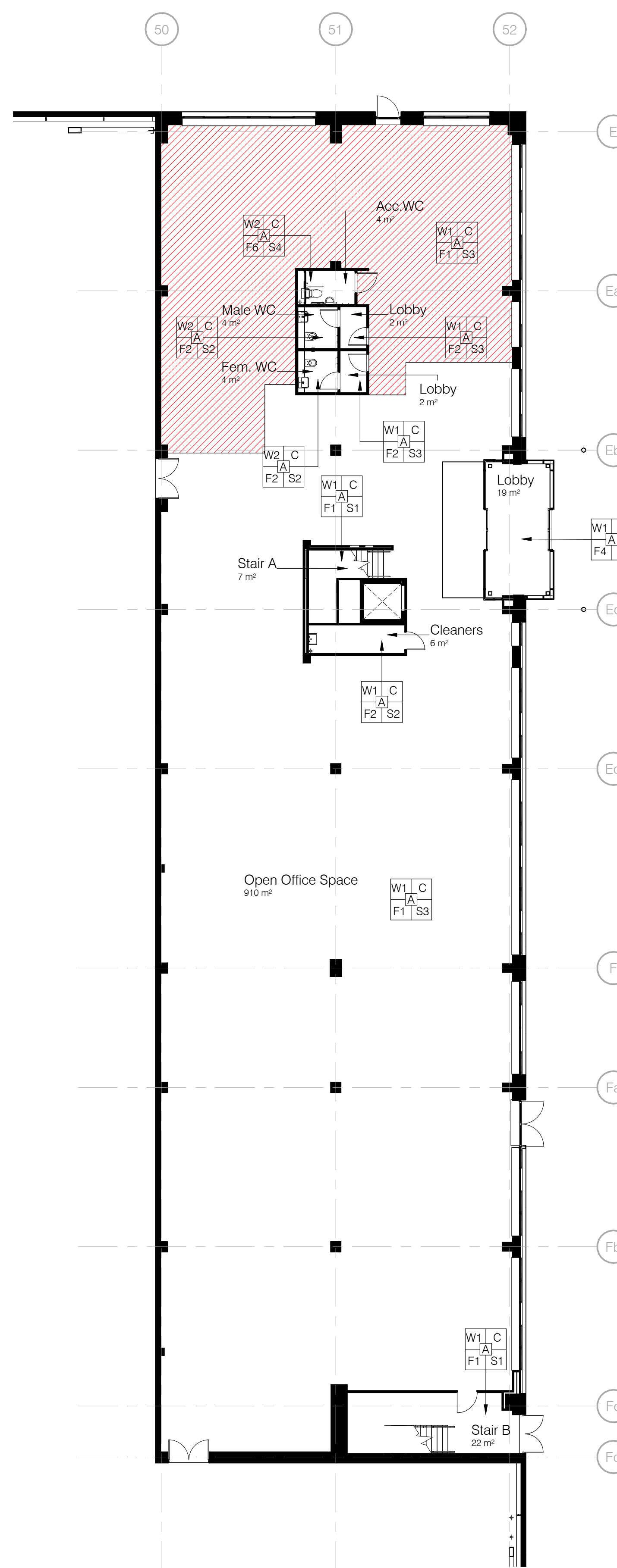
P23-027 The Range Stowmarket

Drawing Register:

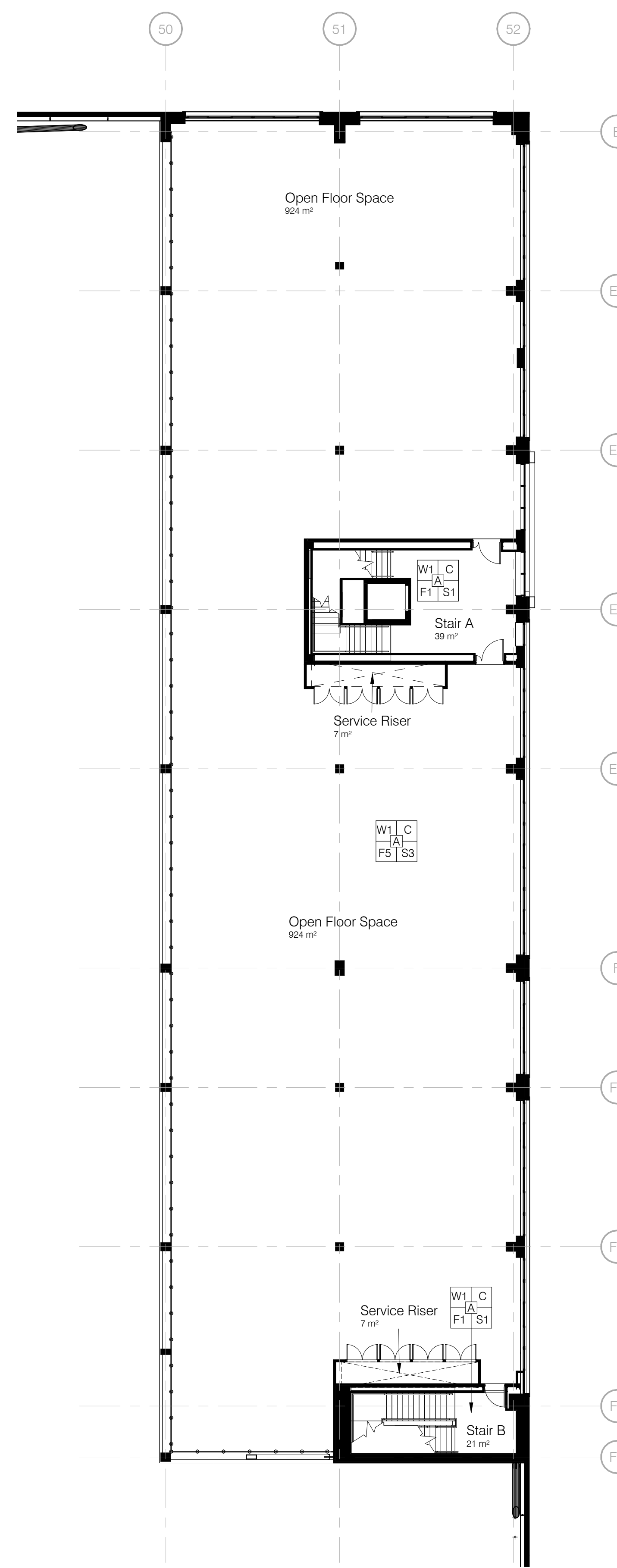
*Please note: All drawings listed below are hyperlinked to the drawings listed.
Please click on the drawing title to go directly to the drawing of your choice.*

Works Completed:

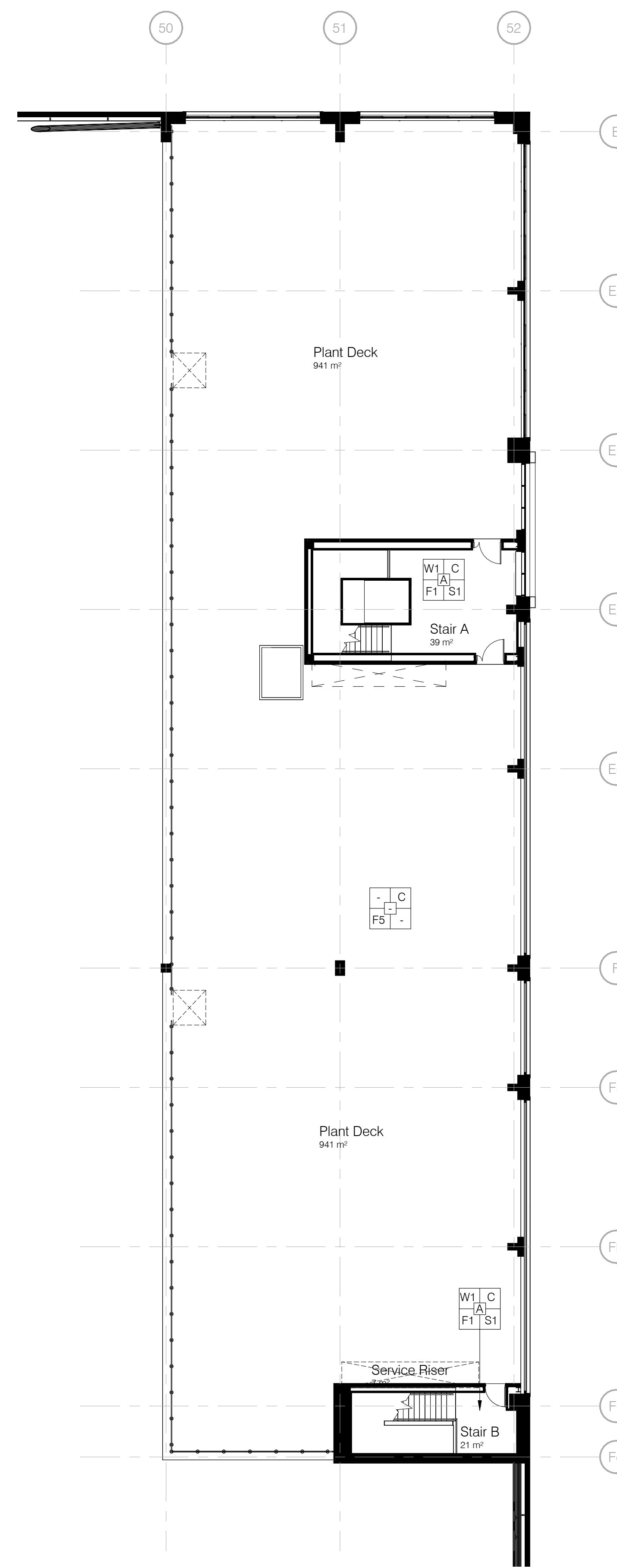
Drawing No.	Drawing Title	Rev
P22036-FSA-ZZ-ZZ-DR-A-1452	Finishes Plan	R01
P22036-FSA-ZZ-ZZ-DR-A-6256	Internal Door Schedule	R01
P22036-FSA-ZZ-ZZ-SH-A-6220	Schedule of Finishes	R01



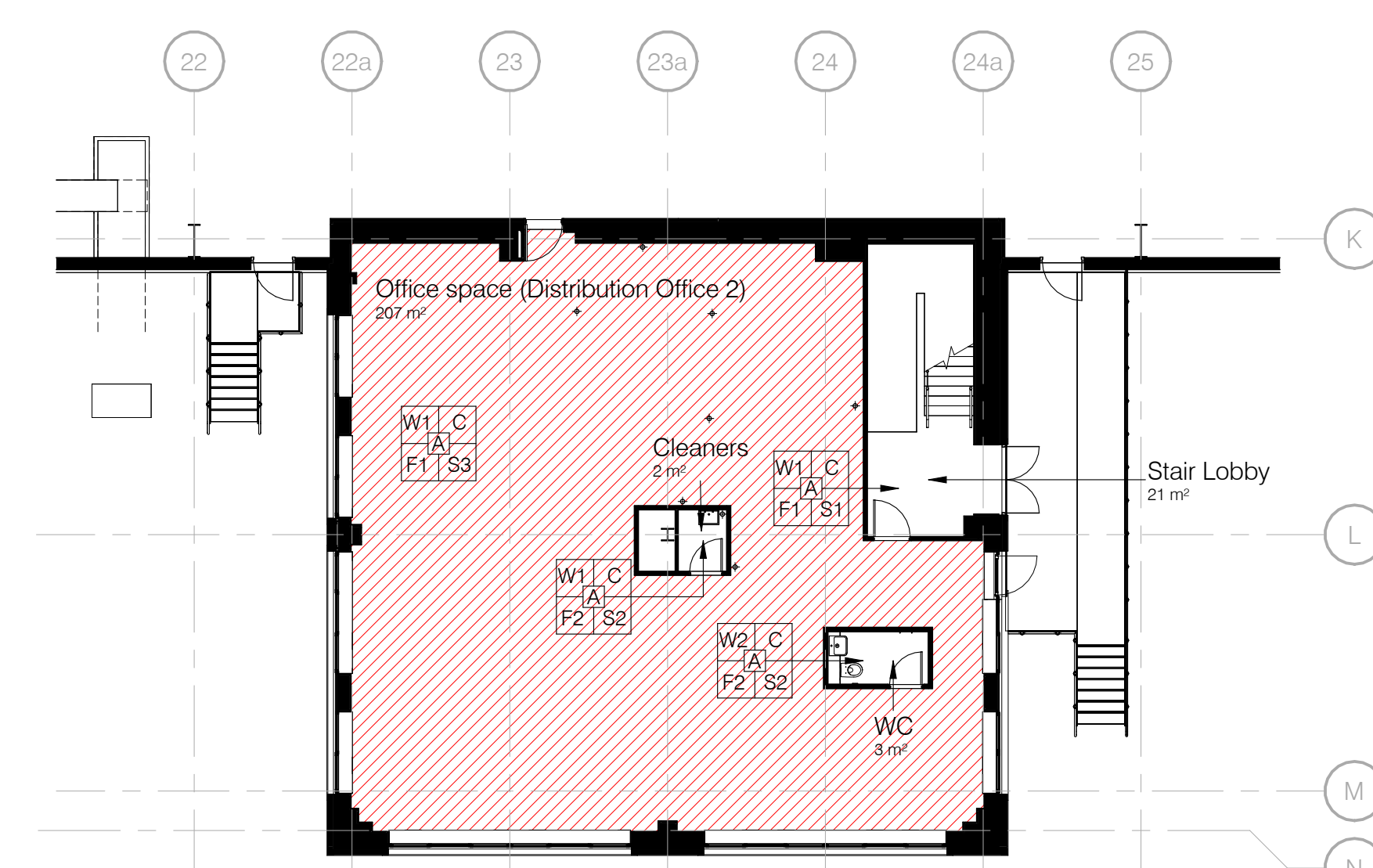
Main Office // Ground Floor Finishes



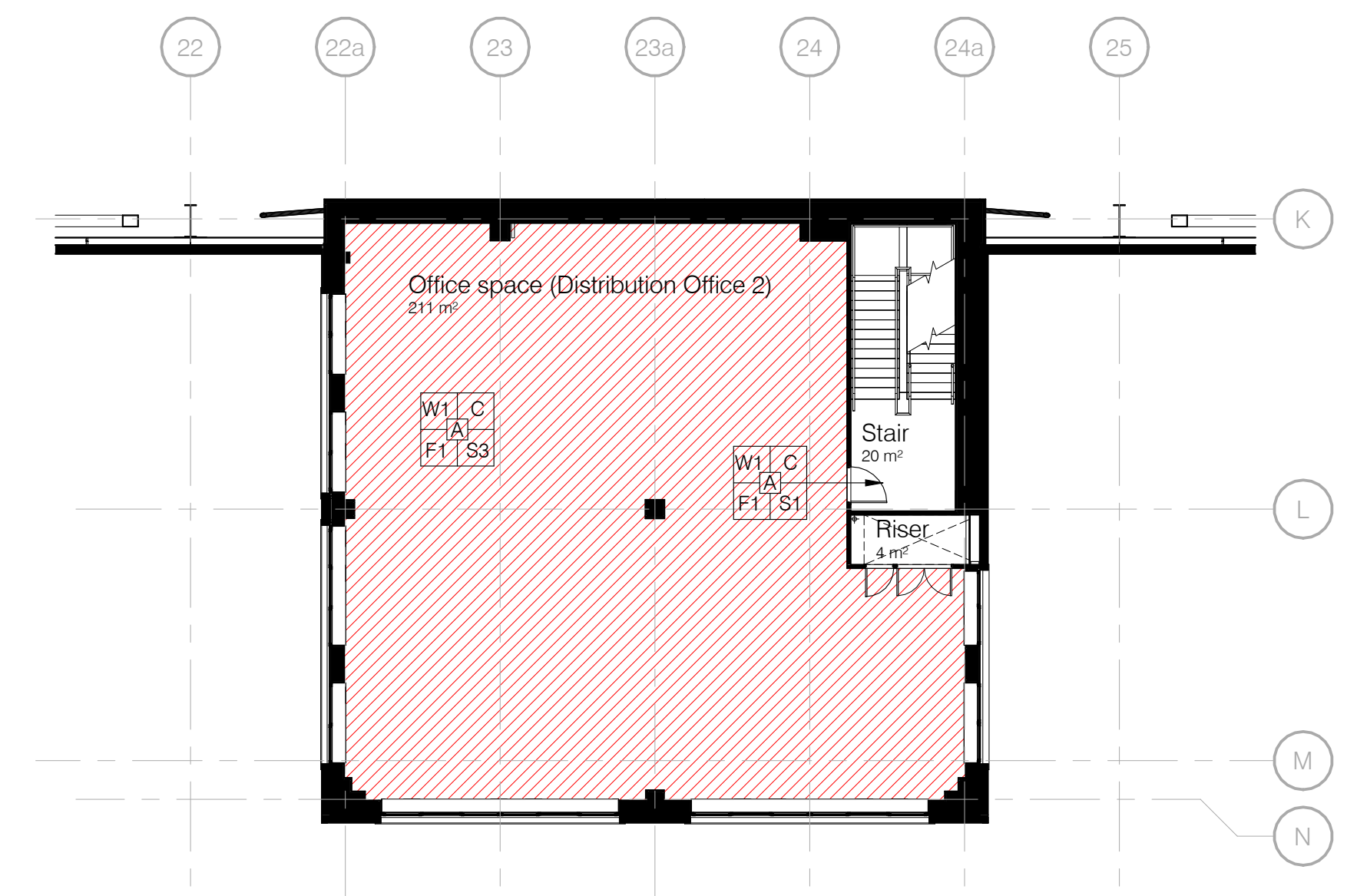
Main Office // First Floor Finishes



Main Office // Second Floor Finishes



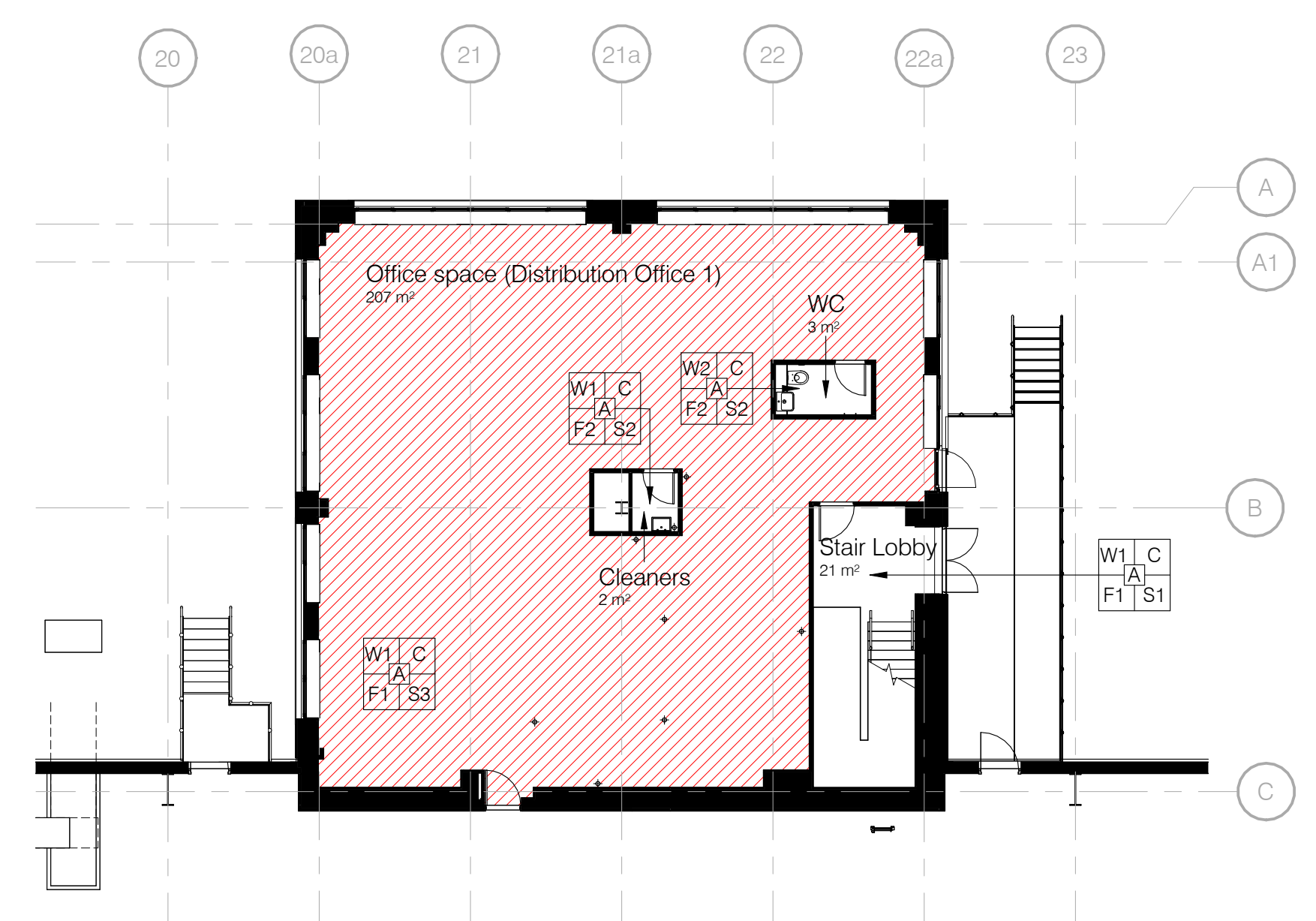
Distribution Office 2 Ground Floor Plan



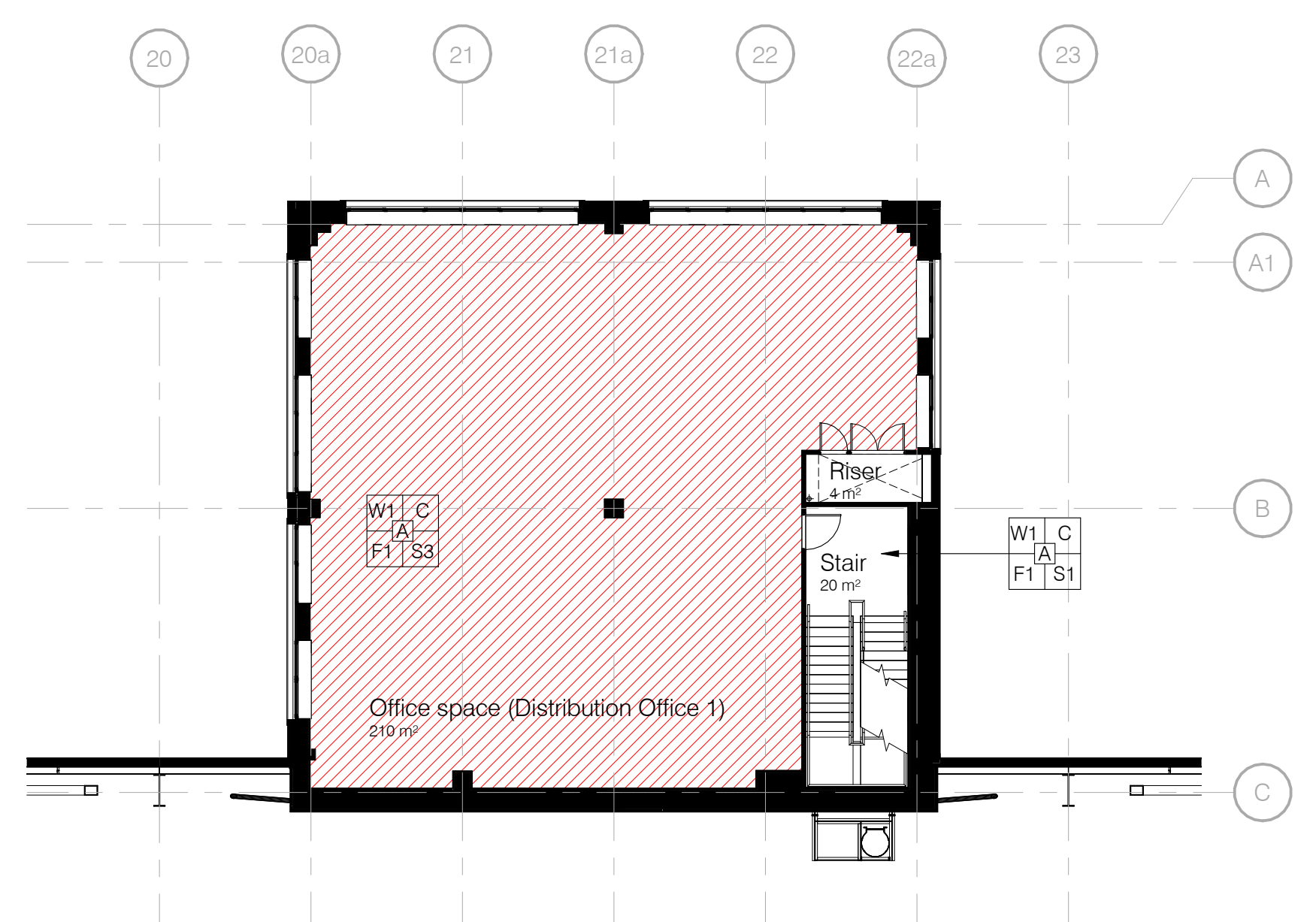
Distribution Office 2 First Floor Plan



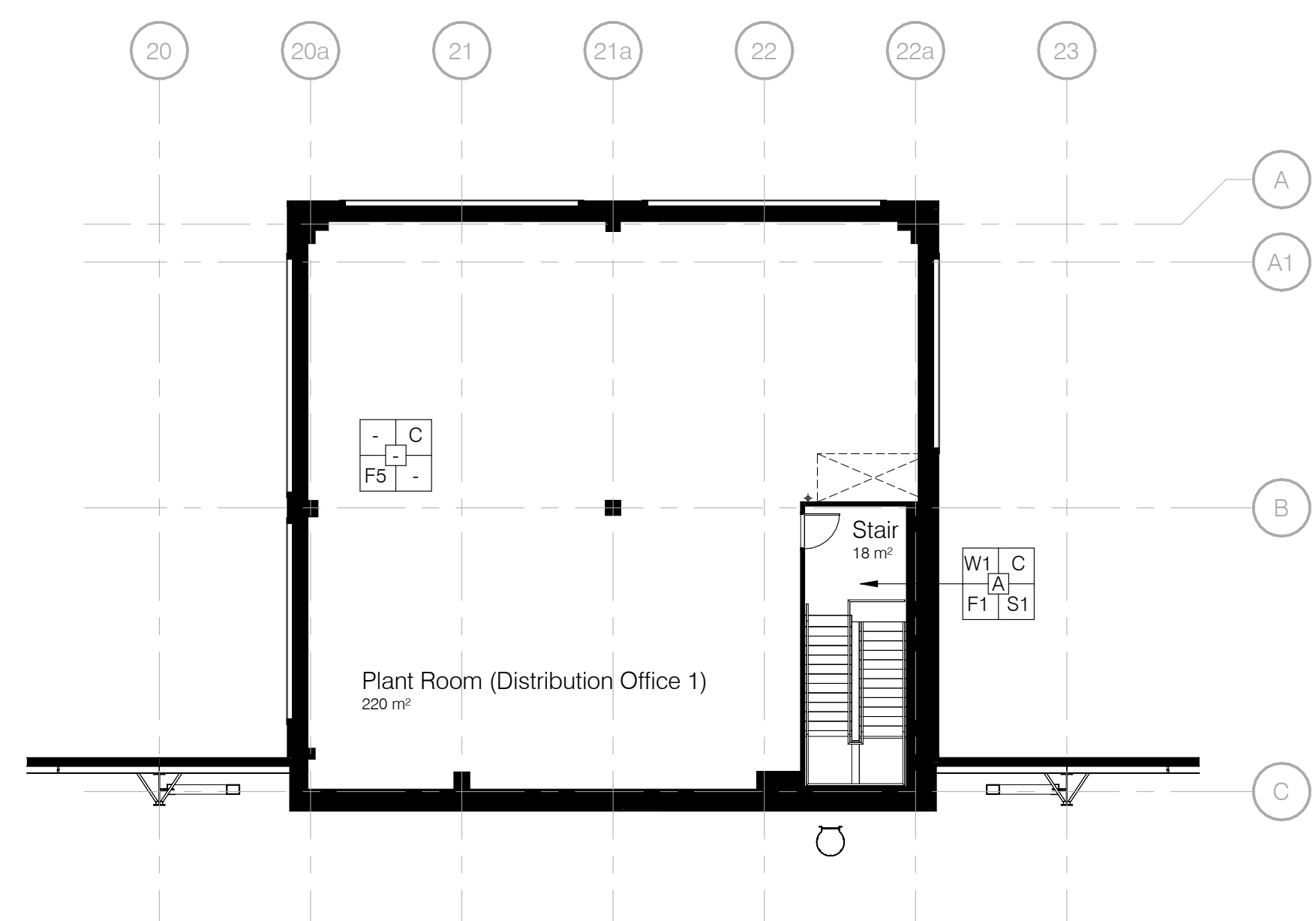
Distribution Office 2 // Second Floor Finishes



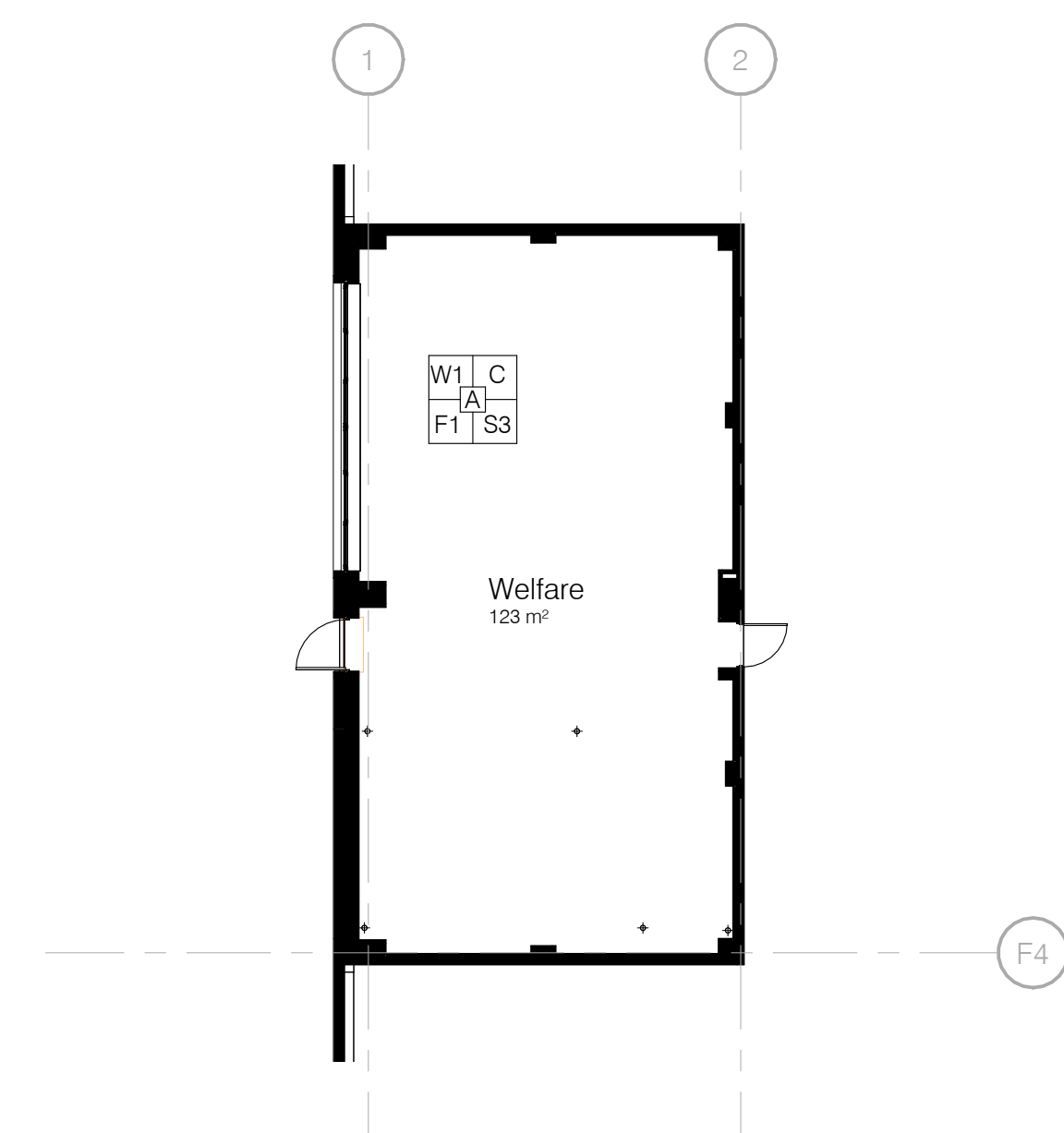
Distribution Office 1 // Ground Floor Finishes



Distribution Office 1 // First Floor Finishes



Distribution Office 1 // Second Floor Finishes



Welfare // Ground Floor Finishes

Finishes Legend

- Wall Finishes**
W1 Internal wall surfaces to offices, ancillary, and circulation areas. To be finished with one mist coat and two coats vinyl silk emulsion paint. Colour: Crown Paints BS4800 J0550D (LRV max: 55)
W2 Toilet Areas. To be finished with Altro Whitecore or equal approved lining system. Colour: Flint (LRV max: 32)
- Floor Finishes**
F1 Raised Access Floor. Hatch indicates areas of raised access (all other areas are concrete). Refer to drawing 1454 for setting out.
F2 Flooring Generally. Interface Heugs 530L or similar approved carpet tile flooring. Colour: 4288007 Basalt (laid quarter turn)
F3 Toilets & Cleaners. Polyflor XL or similar approved Vinyl finished with matching covered 100 mm high skirtings. Colour: 3720 Flint
F4 Flooring Generally. Interface Heugs 530L or similar approved carpet tile flooring. Colour: 4288007 Basalt (laid quarter turn)
F5 Entrance Matwell. Mat Works MW Rib HD or similar approved barrier mat in matwell and frame consisting of an metal frame fixed into the concrete sub floor. Colour: Anthracite
F6 Concrete Floor. Floor slab to be finished with a power float finish with dust sealer
F7 Accessible WC. Johnson Tiles Minerals Grip 600x600mm or similar approved ceramic tiles with matching skirtings. Colour: Chalk (MIN01G)
- Skirting Finish**
S1 Skirting Generally. American White Oak. Skirtings will be provided to the exposed edges of the staircases and landings. Skirting to match skirtings to adjacent walls in stair cores only. Colour: Natural finish
S2 Toilets & Cleaners. 100 mm high covered vinyl skirtings to match floor finish
S3 Skirting Generally. MDF primed, undercoated and 2 full coats of gloss. Refer to drawing 6256. Colour: Crown Paints BS4800 White BS 00 E 95 (LRV min: 85)
S4 Skirting Accessible WC. 100mm high ceramic skirting to match floor finish
- Joinery Finish**
A Architraves & Window Boards Generally. MDF primed, undercoated and 2 full coats of gloss. Refer to drawing 6256. Colour: Crown Paints BS4800 White BS 00 E 95 (LRV min: 85)
C Ceiling Finish. Refer to drawings 1450 and 1451

0 1.5 3 6 12
 Scale 1: 150
RECORD ISSUE
 CDM Residual Risks
 In addition to the hazards/risks normally associated with the types of work detailed on this drawing, please note the following:
Construction
 C1. Triple height voids.
Maintenance
 M1. Triple height voids.
Decommissioning / Demolition
 D1. Triple height voids.
 It is assumed that works will be carried out by a competent contractor working, where appropriate, to an approved method statement.

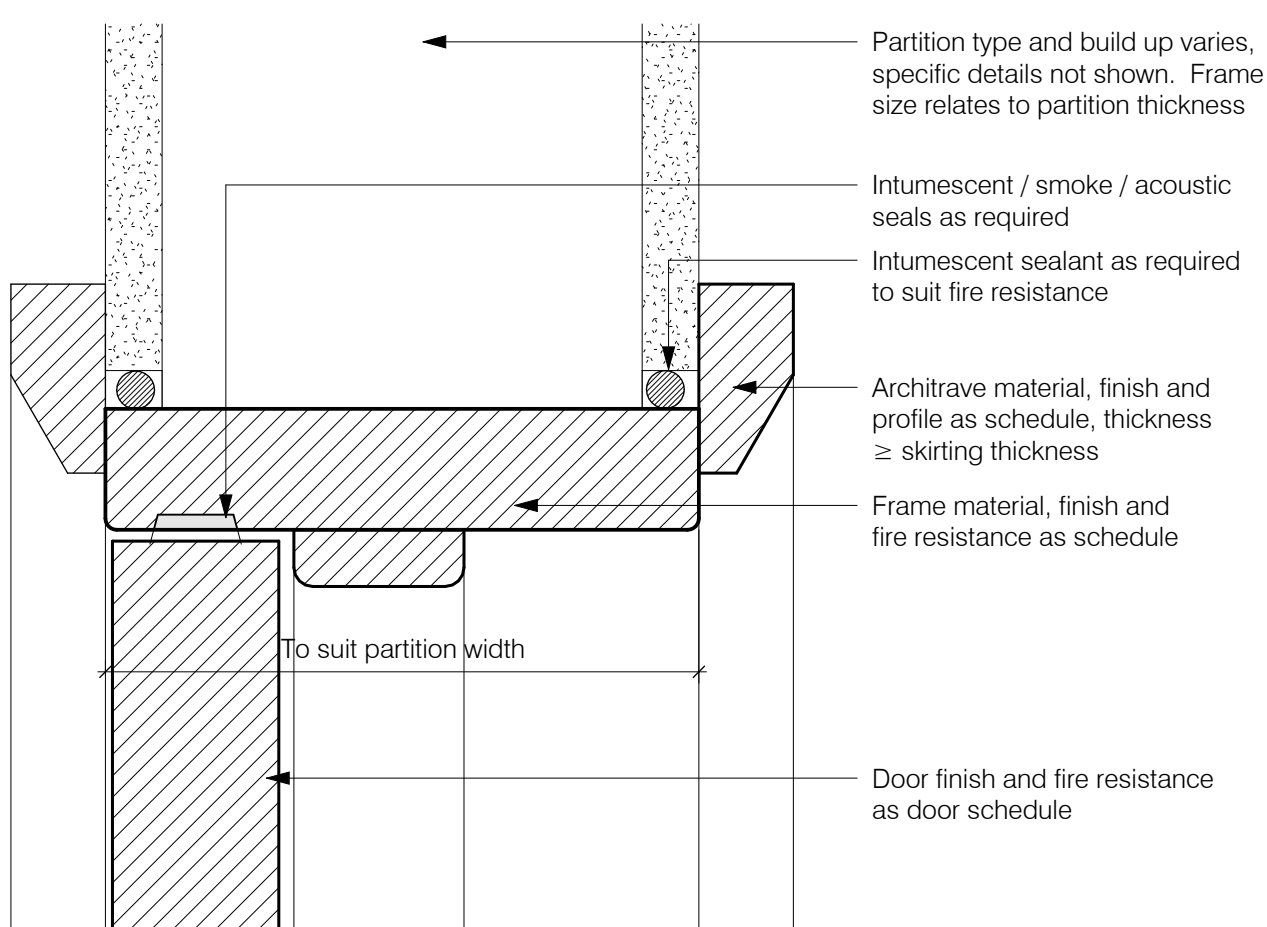
R01	RECORD ISSUE	12/10/23	CEW
C06	TILING UPDATED	15/09/23	MJB
C08	PARTITION TO CLEANERS STORE AMENDED	08/09/23	MJB
C04	FLOOR FINISH TO ACCESSIBLE WC UPDATED TO CLIENT REQUEST	11/08/23	MJB
C03	JOINERY UPDATED	25/08/23	MJB
C02	UPDATED TO CONTRACTORS COMMENTS	08/06/23	MJB
C01	ISSUED FOR CONSTRUCTION	17/05/23	MJB
R03	UPDATED TO SUIT WALLS	05/05/23	MJB
R02	UPDATED TO COMMENTS	21/04/23	MJB
R01	PRELIMINARY ISSUE	06/04/23	MJB
No.	Revision	Date	Ints

PLOT 4000
GATEWAY14
 Drawing: FINISHES PLANS
 Client: **JAYNIC**
winvic
FRANK SHAW ASSOCIATES LIMITED ARCHITECTS
 Penrith House, Hasland, Chesterfield, Derbyshire, S41 0SU
 Tel: 01246 233225 www.frankshawassociates.co.uk
 Email: 1150@AO MJB
 Job Number: 21067 Date: 06/04/23
 Drawing Number: P22036-FSA-ZZ-ZZ-DR-A-1452 Rev: R01

Internal Doors Schedule

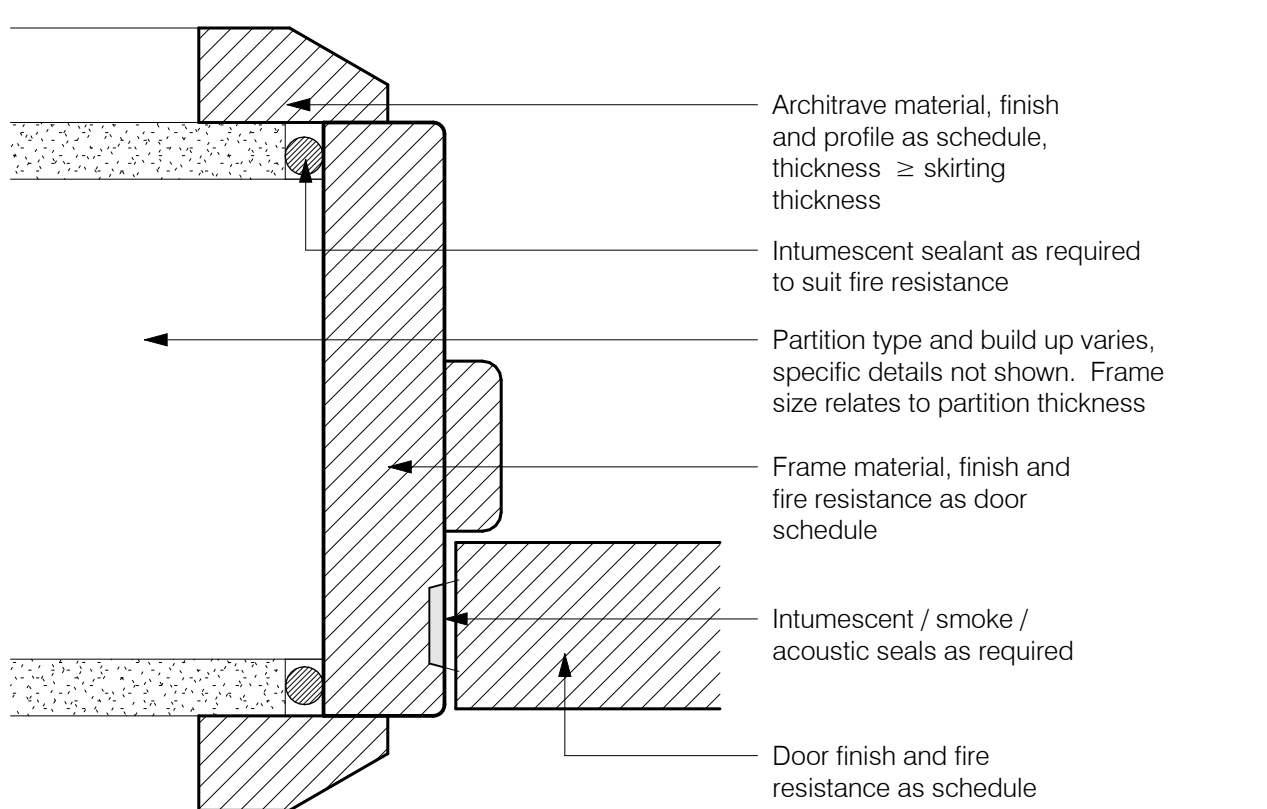
Door Number	Door Type	Location	Accessible	Fire Rating	Vision Panel	SO Width	SO Height	Lintel Req.	Lintel Type	Wall Type	Wall Thickness	Door Material	Door Finish	Frame Type	Frame Colour	Architraves	Architrave Colour	Ironmongery Pack
Ground Floor Level																		
D.0.01	Type 1	Cleaners	Yes	FD30	No	910	2110	No	N/A	Metal Stud Partition	100	Solid Core Veneer	American White Oak	Gloss Painted MDF	White BS00E55	Gloss Painted MDF	White BS00E55	01
D.0.02	Type 2	Lobby	Yes	NFR	No	910	2110	No	N/A	Metal Stud Partition	100	Solid Core Veneer	American White Oak	Gloss Painted MDF	White BS00E55	Gloss Painted MDF	White BS00E55	02
D.0.03	Type 1	Fem. WC	Yes	NFR	No	910	2110	No	N/A	Metal Stud Partition	100	Solid Core Veneer	American White Oak	Gloss Painted MDF	White BS00E55	Gloss Painted MDF	White BS00E55	03
D.0.04	Type 2	Lobby	Yes	NFR	No	910	2110	No	N/A	Metal Stud Partition	100	Solid Core Veneer	American White Oak	Gloss Painted MDF	White BS00E55	Gloss Painted MDF	White BS00E55	04
D.0.05	Type 1	Lobby	Yes	NFR	No	910	2110	No	N/A	Metal Stud Partition	100	Solid Core Veneer	American White Oak	Gloss Painted MDF	White BS00E55	Gloss Painted MDF	White BS00E55	03
D.0.06	Type 1	Acc.WC	Yes	NFR	No	1010	2110	No	N/A	Metal Stud Partition	100	Solid Core Veneer	American White Oak	Gloss Painted MDF	White BS00E55	Gloss Painted MDF	White BS00E55	05
D.0.07	Type 4	Open Office Space	Yes	FD120s	Yes	1940	2110	No	N/A	Composite Panel / Metal Stud Partition	150	Galvanised Steel	Anthracite (RAL 7016)	Galvanised Steel	Anthracite (RAL 7016)	Gloss Painted MDF	White BS00E55	06
D.0.08	Type 2	Stair B	Yes	FD30s	Yes	1010	2110	No	N/A	Metal Stud Partition	100	Solid Core Veneer	American White Oak	Gloss Painted MDF	White BS00E55	Gloss Painted MDF	White BS00E55	07
D.0.09	Type 4	Open Office Space	Yes	FD120s	Yes	1940	2110	No	N/A	Composite Panel / Metal Stud Partition	150	Galvanised Steel	Anthracite (RAL 7016)	Galvanised Steel	Anthracite (RAL 7016)	Gloss Painted MDF	White BS00E55	06
D.0.10	Type 2	Office space (Distribution Office 1)	Yes	FD120s	Yes	1010	2110	No	N/A	Composite Panel / Metal Stud Partition	150	Galvanised Steel	Anthracite (RAL 7016)	Galvanised Steel	Anthracite (RAL 7016)	Gloss Painted MDF	White BS00E55	07A
D.0.11	Type 1	Office space (Distribution Office 1)	Yes	FD30	No	910	2110	No	N/A	Metal Stud Partition	100	Solid Core Veneer	American White Oak	Gloss Painted MDF	White BS00E55	Gloss Painted MDF	White BS00E55	08
D.0.12	Type 1	Office space (Distribution Office 1)	Yes	NFR	No	910	2110	No	N/A	Metal Stud Partition	100	Solid Core Veneer	American White Oak	Gloss Painted MDF	White BS00E55	Gloss Painted MDF	White BS00E55	09
D.0.13	Type 2	Office space (Distribution Office 1)	Yes	FD30s	Yes	1010	2110	No	N/A	Metal Stud Partition	100	Solid Core Veneer	American White Oak	Gloss Painted MDF	White BS00E55	Gloss Painted MDF	White BS00E55	07
D.0.14	Type 2	Office space (Distribution Office 1)	Yes	FD30s	Yes	1010	2110	No	N/A	Metal Stud Partition	100	Solid Core Veneer	American White Oak	Gloss Painted MDF	White BS00E55	Gloss Painted MDF	White BS00E55	07
D.0.15	Type 1	Office space (Distribution Office 2)	Yes	FD30	No	910	2110	No	N/A	Metal Stud Partition	100	Solid Core Veneer	American White Oak	Gloss Painted MDF	White BS00E55	Gloss Painted MDF	White BS00E55	08
D.0.16	Type 1	Office space (Distribution Office 2)	Yes	NFR	No	910	2110	No	N/A	Metal Stud Partition	100	Solid Core Veneer	American White Oak	Gloss Painted MDF	White BS00E55	Gloss Painted MDF	White BS00E55	09
D.0.17	Type 2	Office space (Distribution Office 2)	Yes	FD120s	Yes	1010	2110	No	N/A	Composite Panel / Metal Stud Partition	150	Galvanised Steel	Anthracite (RAL 7016)	Galvanised Steel	Anthracite (RAL 7016)	Gloss Painted MDF	White BS00E55	07A
D.0.18	Type 2	Welfare	Yes	FD120s	Yes	1010	2110	No	N/A	Composite Panel / Metal Stud Partition	150	Galvanised Steel	Anthracite (RAL 7016)	Galvanised Steel	Anthracite (RAL 7016)	Gloss Painted MDF	White BS00E55	07A
First Floor Level																		
D.1.01	Type 5	Stair A	Yes	FD30s	Yes	1360	2110	No	N/A	Composite Panel / Metal Stud Partition	150	Solid Core Veneer	American White Oak	Gloss Painted MDF	White BS00E55	Gloss Painted MDF	White BS00E55	10
D.1.02	Type 5	Open Floor Space	Yes	FD30s	Yes	1360	2110	No	N/A	Composite Panel / Metal Stud Partition	150	Solid Core Veneer	American White Oak	Gloss Painted MDF	White BS00E55	Gloss Painted MDF	White BS00E55	10
D.1.03	Type 2	Stair B	Yes	FD30s	Yes	1010	2110	No	N/A	Composite Panel / Metal Stud Partition	150	Solid Core Veneer	American White Oak	Gloss Painted MDF	White BS00E55	Gloss Painted MDF	White BS00E55	07
D.1.04	Type 3	Service Riser	Yes	FD60	No	1510	2010	No	N/A	Metal Stud Partition	100	Solid Core Veneer	American White Oak	Gloss Painted MDF	White BS00E55	Gloss Painted MDF	White BS00E55	11
D.1.05	Type 3	Service Riser	Yes	FD60	No	1510	2010	No	N/A	Metal Stud Partition	100	Solid Core Veneer	American White Oak	Gloss Painted MDF	White BS00E55	Gloss Painted MDF	White BS00E55	11
D.1.06	Type 3	Service Riser	Yes	FD60	No	1510	2010	No	N/A	Metal Stud Partition	100	Solid Core Veneer	American White Oak	Gloss Painted MDF	White BS00E55	Gloss Painted MDF	White BS00E55	11
D.1.07	Type 3	Service Riser	Yes	FD60	No	1510	2010	No	N/A	Metal Stud Partition	100	Solid Core Veneer	American White Oak	Gloss Painted MDF	White BS00E55	Gloss Painted MDF	White BS00E55	11
D.1.08	Type 3	Service Riser	Yes	FD60	No	1510	2010	No	N/A	Metal Stud Partition	100	Solid Core Veneer	American White Oak	Gloss Painted MDF	White BS00E55	Gloss Painted MDF	White BS00E55	11
D.1.09	Type 3	Service Riser	Yes	FD60	No	1510	2010	No	N/A	Metal Stud Partition	100	Solid Core Veneer	American White Oak	Gloss Painted MDF	White BS00E55	Gloss Painted MDF	White BS00E55	11
D.1.10	Type 1	Riser	Yes	FD60	No	810	2010	No	N/A	Metal Stud Partition	100	Solid Core Veneer	American White Oak	Gloss Painted MDF	White BS00E55	Gloss Painted MDF	White BS00E55	12
D.1.11	Type 3	Riser	Yes	FD60	No	1510	2110	No	N/A	Metal Stud Partition	100	Solid Core Veneer	American White Oak	Gloss Painted MDF	White BS00E55	Gloss Painted MDF	White BS00E55	11
D.1.12	Type 2	Office space (Distribution Office 1)	Yes	FD30s	Yes	1010	2110	No	N/A	Metal Stud Partition	100	Solid Core Veneer	American White Oak	Gloss Painted MDF	White BS00E55	Gloss Painted MDF	White BS00E55	07
D.1.13	Type 2	Office space (Distribution Office 2)	Yes	FD30s	Yes	1010	2110	No	N/A	Metal Stud Partition	100	Solid Core Veneer	American White Oak	Gloss Painted MDF	White BS00E55	Gloss Painted MDF	White BS00E55	07
D.1.14	Type 3	Service Riser	Yes	FD60	No	1510	2010	No	N/A	Metal Stud Partition	100	Solid Core Veneer	American White Oak	Gloss Painted MDF	White BS00E55	Gloss Painted MDF	White BS00E55	11
D.1.15	Type 3	Service Riser	Yes	FD60	No	1510	2010	No	N/A	Metal Stud Partition	100	Solid Core Veneer	American White Oak	Gloss Painted MDF	White BS00E55	Gloss Painted MDF	White BS00E55	11
D.1.16	Type 3	Riser	Yes	FD60	No	1510	2010	No	N/A	Metal Stud Partition	100	Solid Core Veneer	American White Oak	Gloss Painted MDF	White BS00E55	Gloss Painted MDF	White BS00E55	11
D.1.17	Type 1	Riser	Yes	FD60	No	810	2010	No	N/A	Metal Stud Partition	100	Solid Core Veneer	American White Oak	Gloss Painted MDF	White BS00E55	Gloss Painted MDF	White BS00E55	12
Second Floor Level																		
D.2.01	Type 5	Plant Deck	Yes	FD30s	Yes	1360	2110	No	N/A	Composite Panel / Metal Stud Partition	150	Solid Core Veneer	American White Oak	Gloss Painted MDF	White BS00E55	Gloss Painted MDF	White BS00E55	10
D.2.02	Type 5	Plant Deck	Yes	FD30s	Yes	1360	2110	No	N/A	Composite Panel / Metal Stud Partition	150	Solid Core Veneer	American White Oak	Gloss Painted MDF	White BS00E55	Gloss Painted MDF	White BS00E55	10
D.2.03	Type 2	Plant Room (Distribution Office 1)	Yes	FD30s	Yes	1010	2110	No	N/A	Metal Stud Partition	100	Solid Core Veneer	American White Oak	Gloss Painted MDF	White BS00E55	Gloss Painted MDF	White BS00E55	07
D.2.04	Type 2	Plant Room (Distribution Office 2)	Yes	FD30s	Yes	1010	2110	No	N/A	Metal Stud Partition	100	Solid Core Veneer	American White Oak	Gloss Painted MDF	White BS00E55	Gloss Painted MDF	White BS00E55	07
D.2.05	Type 2	Plant Deck	Yes	FD30s	Yes	1010	2110	No	N/A	Composite Panel / Metal Stud Partition	150	Solid Core Veneer	American White Oak	Gloss Painted MDF	White BS00E55	Gloss Painted MDF	White BS00E55	07

Grand total: 40



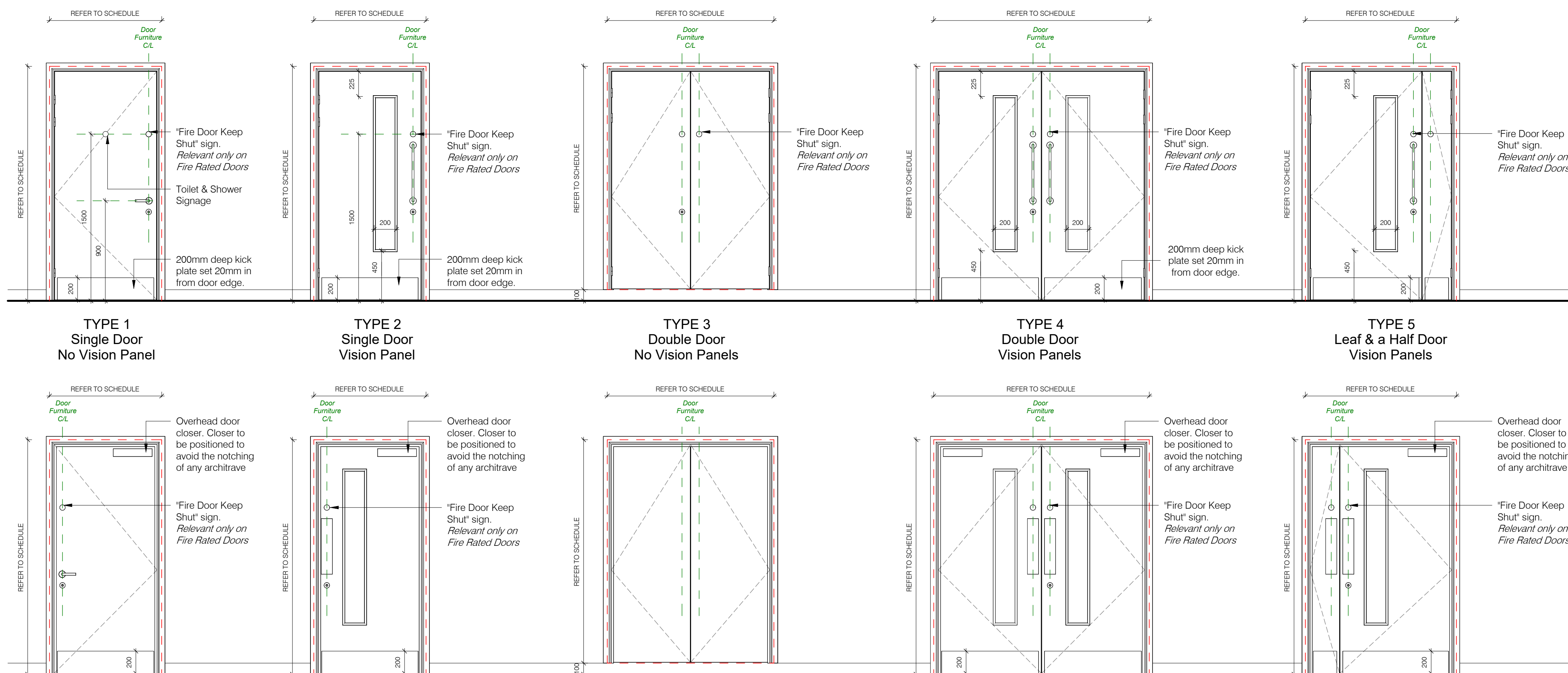
Typical internal door head detail

1 : 2



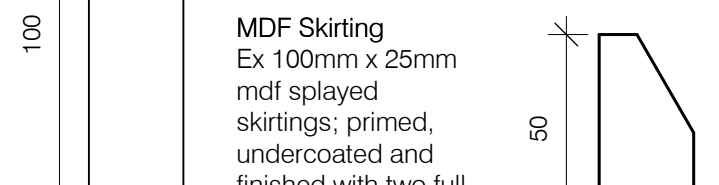
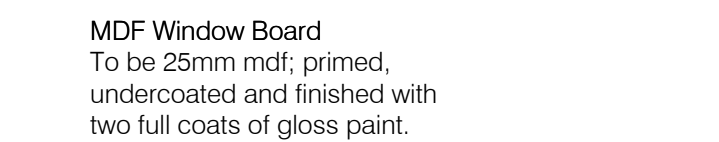
Typical internal door jamb detail

1 : 2



Architrave And Skirting Details

1 : 2



Door Elevations

1 : 25

CDM Residual Risks

In addition to the hazards/ risks normally associated with the types of work detailed on this drawing, please note the following:

- Construction**
C1. No applicable risks.

- Maintenance**
M1. No applicable risks.

- Decommissioning / Demolition**
D1. No applicable risks.

It is assumed that works will be carried out by a competent contractor working, where appropriate, to an approved method statement

Internal Door and Ironmongery Legend

Where required by the Building Control Officer, doors will have an appropriate fire rating and be fitted with intumescent strips, smoke seals, door closers and vision panels of min width 150 mm in accordance with BS 8300 and Approved Documents B and M.

Ironmongery will be appropriate to the location of the door and will be Eisenware or similar approved, Grade 316 stainless steel door furniture with ancillary fittings.

Locks will be suited as follows:

- Master key to all doors;
- Submaster key to all ground floor doors;
- Submaster key to all first floor doors.

No locking facility is required to be provided to toilets and fire exit doors.

For ironmongery please refer to Ironmongery Sets Schedule.

R01	RECORD ISSUE	12/10/23	CEW
C05	VPS UPDATED	04/09/23	MJB
C04	JOINERY UPDATED	23/06/23	MJB
C03	COLOURS UPDATED	20/06/23	MJB
C02	UPDATED TO CONTRACTORS COMMENTS	09/06/23	MJB
C01	ISSUED FOR CONSTRUCTION	17/05/23	MJB
F04	FIRE RATINGS UPDATED AND WALL THICKNESSES ADDED	05/05/23	MJB
P03	UPDATED TO COMMENTS	21/04/23	MJB
P02	IRONMONGERY SETS AND FINISHES ADDED	29/03/23	MJB
F01	PRELIMINARY ISSUE	08/03/23	MJB
No.	Revision	Date	Initi

JOB
PLOT 4000
GATEWAY14
STOWMARKET

Drawing
INTERNAL DOOR SCHEDULE



FRANK SHAW ASSOCIATES LIMITED ARCHITECTS

Permore House Hasland Chesterfield Derbyshire S41 0SJ
Tel 01246 233255 www.frankshawassociates.co.uk

Scale Drawn/Checked

As indicated@A1 MJB

Job Number Date

21067 08/03/23

Drawing Number Rev

P22036-FSA-ZZ-ZZ-DR-A-6256 R01

PLOT 4000 // INTERNAL FINISHES SCHEDULE



CEILINGS
Generally



Zentia Dune Evo
White
Approx. LRV 85+



Crown Paints
BS4800 White 00 E 55 Vinyl Silk
LRV 85

DOORS
Generally



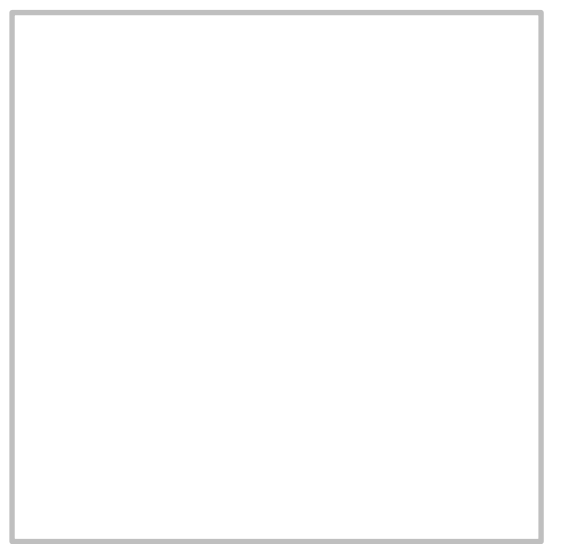
Veneer / Laminate
American White Oak

ARCHITRAVES



Crown Paints
BS4800 White 00 E 55 Gloss
LRV 85

SKIRTING



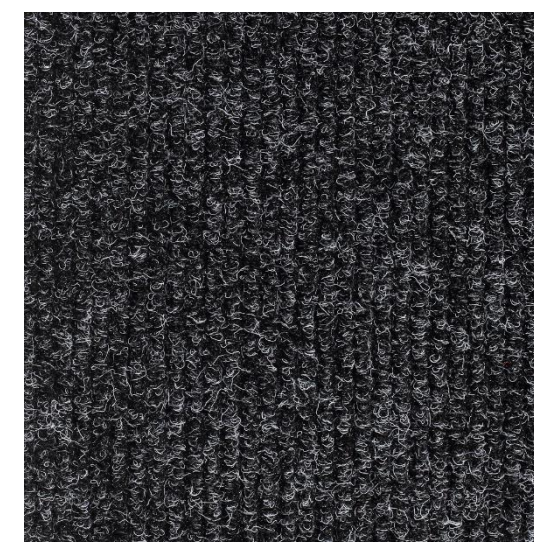
Crown Paints
BS4800 White 00 E 55 Gloss
LRV 85

CEILINGS
Toilets



Zentia Hydroboard
White
Approx. LRV 85+

ENTRANCE
MATTING



Mat.Works
MW Rib HD
Anthracite
LRV

STRINGERS



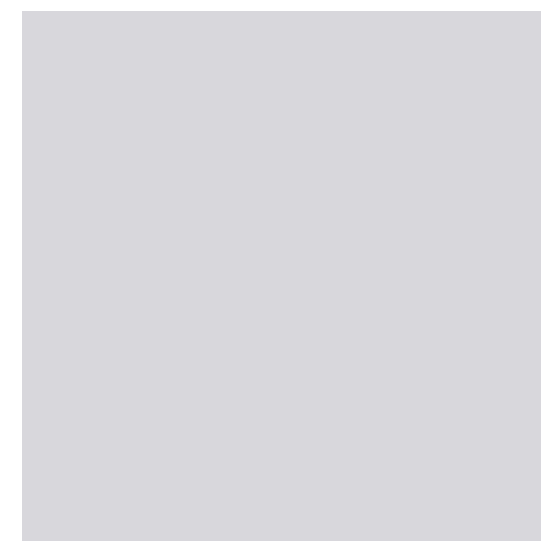
American White Oak

TOILET VANITY
TOPS



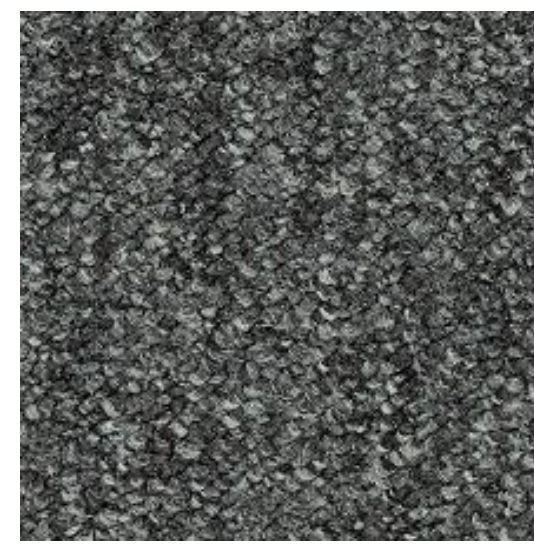
Polrey
Gris Orage FA G059
LRV

WALL PAINT
Generally



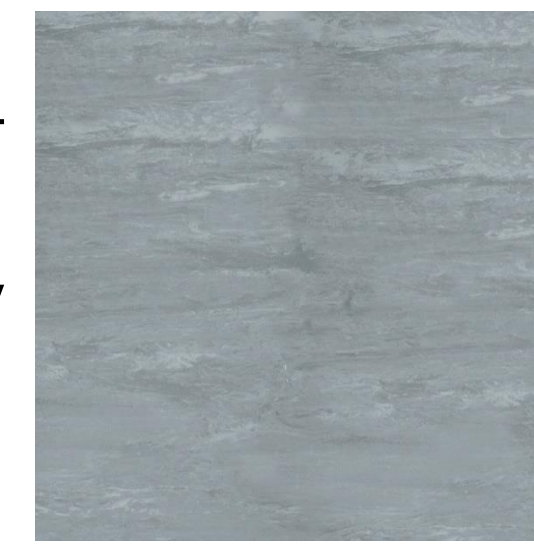
Crown Paints
BS4800 J0550D Vinyl Silk
LRV 55

CARPET TILES
Generally



Heuga
530L
Basalt 4288007
LRV 6

VINYL
FLOORING
Generally



Polyflor
XL PU
Flint 3720
LRV 25

TOILET IPS
FLASHGAPS



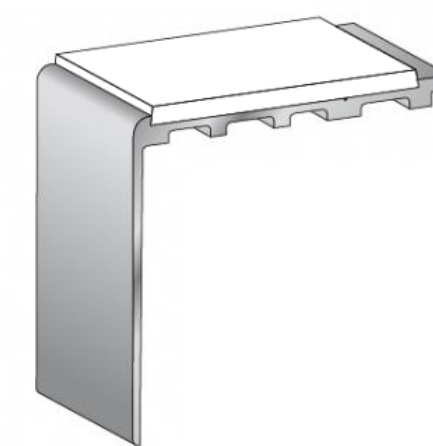
Polyrey
Gris Perle FA G003
LRV

WALL
CLADDING
Toilet Areas



Altro
Whiterock
Flint
LRV 32

STAIR
NOSINGS



Quantum
HF 153
Polar Grey insert
LRV 49

TOILET
IPS PANELS



Polyrey
Chene Alba FA C180
LRV